





Magnolia

Magnolias – the thoroughbred aristocracy in the world of bushes and trees. They have undergone not many changes over millennia because they were created perfect from the beginning. That is why we chose the name of the complex, corresponding with persistency, indestructibility and sophistication as the building itself.





Conception

"Magnolia" is the name of the development offering its inhabitants the opportunity to escape the hectic and dynamic metropolis by immersing in an environment offering exceptionally high quality of life in harmony with nature at the foot of Vitosha Mountain.





The terrain in “Boyana” has a pronounced slope, its highest part facing the heart of the residential district. To avoid a cascade development, the plot is equalized. A terrace-like landscaped supporting wall is constructed, complete with multiple rock gardens gradually fusing into a pine forest. Inspired by the desire to create a place of tranquility and harmony between man and nature, we designed a recognizable and memorable residential development corresponding with the clarity and purity of geometric form.



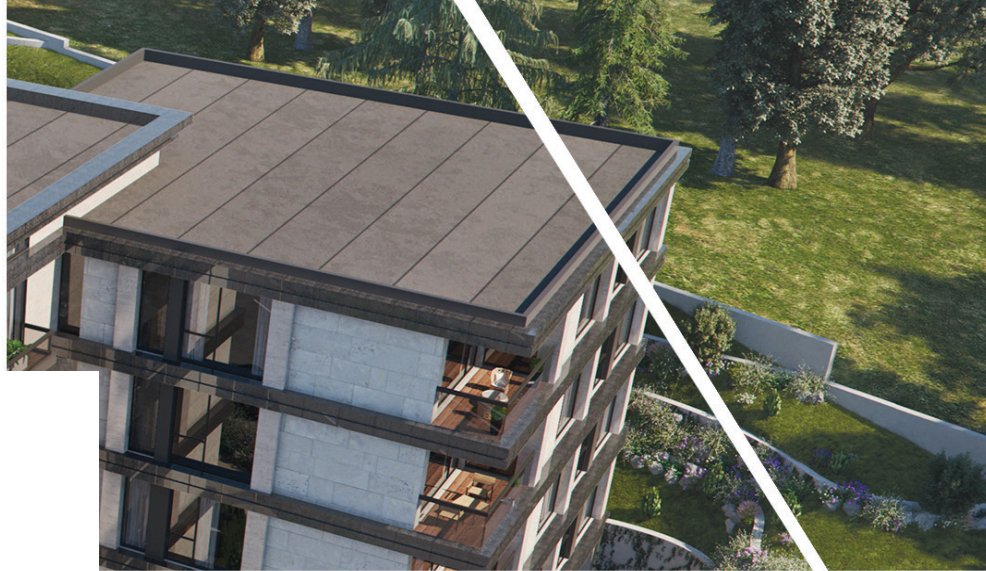


The clean lines of the architectural design are in a perfect harmony with the environment, the coziness and the unique beauty of the natural park. The servicing areas of the development are situated near the entrance, in order to reduce the risk of overpopulating the complex with outside visitors and to ensure better comfort of living.



Harmony

The building is a harmonious combination of three rectangular stair-like shapes unified by diagonal geometry. Horizontal elements made with natural materials give the building a modern and stylish look.




Magnolia
RESIDENTIAL COMPLEX







Architecture

The linear architecture of facades is transferred to floor planning, the individual apartments and common premises having clear and regular shapes.

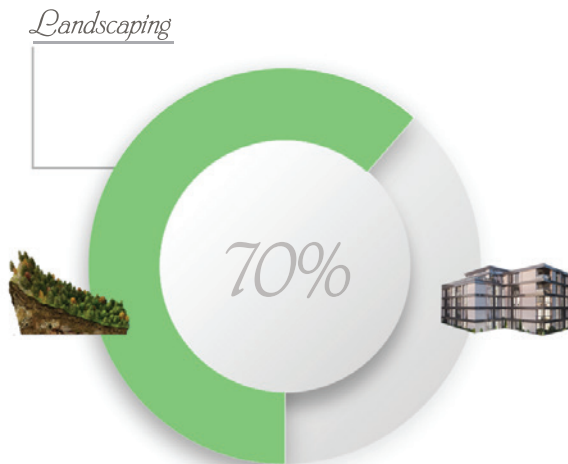
We created a contemporary architectural ensemble in a rich park environment with well thought-out and organized architecture. The six-floor residential building is divided into three levels with two entrances. The apartments consist of two, three, and four rooms, with floor area of 90 sq.m to 540 sq.m.









What makes it different?

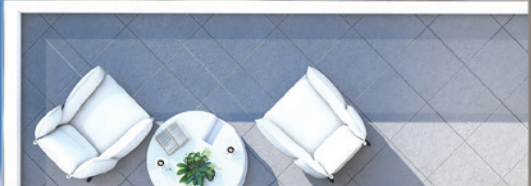
The residential development is situated on a land plot with a surface area of 4,327 sq.m blending into a natural pine forest. Construction is limited to 30% of the plot. The remaining part of it is for landscaping.





Advantages and characteristics

-  *Compliance with all construction indicators of the Detailed Regulation Plan is ensured, whereas works are not aimed at high quantity, but good quality of construction.*
-  *A modern architectural ensemble for year-round living is created, meeting contemporary norms for functionality, aesthetics, and space, at a reasonable price.*
-  *An internal yard is planned, richly landscaped and equipped with areas for relaxation and recreation, gently fusing into a park.*
-  *All apartments are designed with a beneficial exposure and have residential status.*







Design

The development offers a building with high quality of design and functionality, situated in an area rich with greenery, convenient communications, and comfort of living.





APARTMENT A21



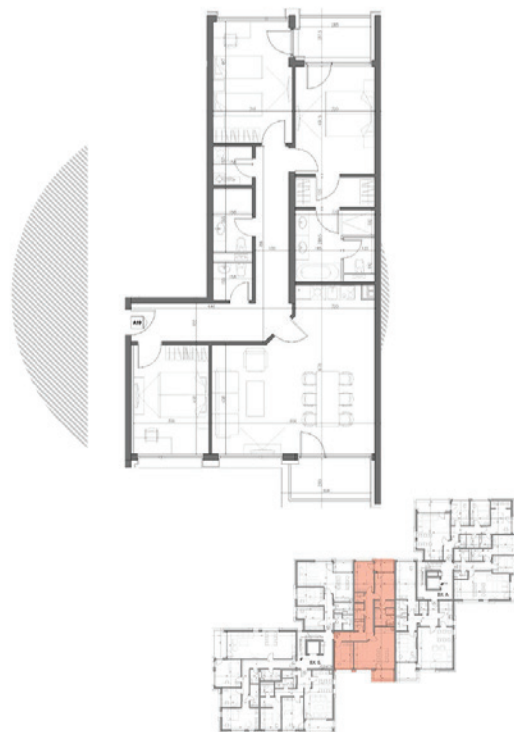
APARTMENT A23



APARTMENT A20



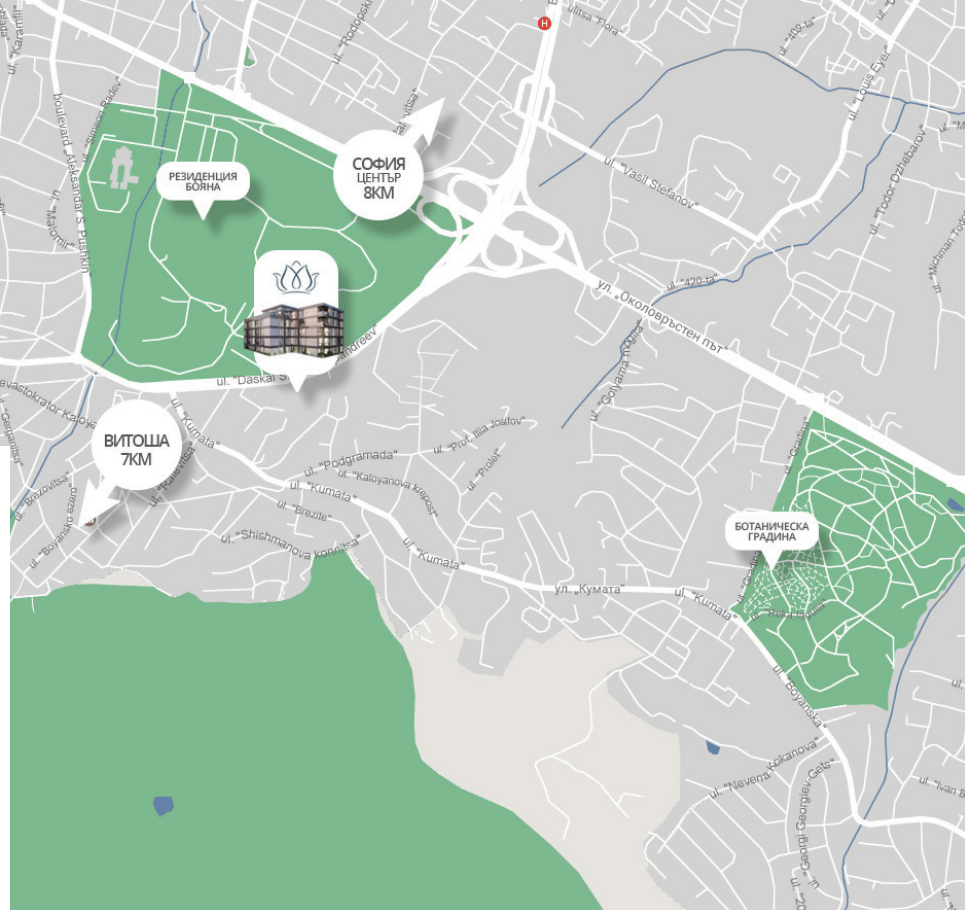
APARTMENT A19



Location

Unique location in a prestigious region of the capital combining proximity to the large city with the tranquility and natural greenery of Vitosha.

The Boyana waterfall is situated within an hour's walk from the development. The Vitosha park, Botanical garden, National history museum, as well as many other natural sights and historical places of interest can be accessed quickly and easily.







Sofia 1606,
13-15 Shandor Petiofi Str.

+359 882 883 883
info@magnoliya.bg
www.magnoliya.bg

